



SPILL CONTAINMENT



Poly drip trays - general purpose

General purpose drip trays provide a safe and convenient way to store, handle and transport drums, containers, machinery, parts and tools. Manufactured from polyethylene they're resistant to oil, fuel and a wide range of chemicals.

- Suitable for use with oily parts, tools, drums and containers
- Variety of sizes to suit different applications
- Range from 5L through to 153L capacity



Tray - shelf size small

Size (mm)	Vol.	Code
500 x 320 x 50	5L	SCMH-PT5



Tray - mini rectangle

Size (mm)	Vol.	Code
790 x 400 x 50	13L	SCMH-PT13



Pouring tray with lip

Size (mm)	Vol.	Code
530 x 400 x 90	16L	SCMH-PT16P



Tray - shelf size rectangle

Size (mm)	Vol.	Code
1000 x 360 x 50	17L	SCMH-PT17



Tray - small square

Size (mm)	Vol.	Code
600 x 600 x 70	23L	SCMH-PT23



Tray - large rectangle

Size (mm)	Vol.	Code
1000 x 550 x 150	65L	SCMH-PT65



Tray - large square

Size (mm)	Vol.	Code
1000 x 1000 x 120	100L	SCMH-PT100



Tray - XL square

Size (mm)	Vol.	Code
1200 x 1200 x 120	153L	SCMH-PT153

Poly drip trays - heavy duty

Heavy duty drip trays are manufactured from thick UV-stabilised polyethylene making them robust and durable.

- Resistant to oil, fuel and a wide range of chemicals
- Suitable for storing drums, cans, oily parts, rags, machinery or tools
- Extra large tray is large enough to accommodate one standard sized pallet
- Feature encapsulated data plates which include product information, volume and construction material



Heavy duty tray - small

Size (mm)	Vol.	Code
695 x 495 x 100	25L	SCTRAYS



Heavy duty tray - medium

Size (mm)	Vol.	Code
900 x 700 x 100	52L	SCTRAYM



Heavy duty tray - large

Size (mm)	Vol.	Code
1435 x 775 x 175	159L	SCTRAYL



Heavy duty tray - extra large

Size (mm)	Vol.	Code
1355 x 1355 x 175	256L	SCTRAYXL

Metal drip trays

Metal drip trays provide a safe and convenient way to store, handle and transport drums, containers, machinery, parts and tools. Manufactured from heavy duty galvanised steel, these metal drip trays are ideal to contain Class 3 flammable liquids and combustible liquids.

- Rolled edges prevent cuts or injuries from sharp edges
- An integral grounding connector is included for earthing, if required (grounding wire sold separately)
- Labelled with earthing instructions, net weight and maximum volume



Metal drip tray - small

Size (mm)	Vol.	Code
585 x 395 x 100	22L	SCMH-MTS

Metal drip tray - medium

Size (mm)	Vol.	Code
1025 x 585 x 100	56L	SCMH-MTM

Metal drip tray - large

Size (mm)	Vol.	Code
1025 x 995 x 100	59L	SCMH-MTL

Specialty trays and small bunds

Specialty trays and small bunds are ideal spill containment tools to capture leaks, drips and spills from single drums or smaller liquid containers.



Single drum bund

- Store a single 205L drum
- 830mm OD x 605mm (H)
- Polyethylene construction

Capacity	Code
230 litres	DB1GS

Shelf collection tray

- Use with 20L drums
- 340mm wide with 5L sump
- Polypropylene construction

Dimensions (mm)	Code
340 (w) x 360 (h)	SCMH-PTSHELF

Banded decanting stand

- Use with 20L drums
- Built in 40L sump
- Polypropylene construction

Dimensions (mm)	Code
360 x 650 x 650	SCMH-BDS40

Spill mat with poly grate

- 650gsm yellow PVC spill mat with poly grate
- Keep objects elevated off the mat floor
- Removable grate for easy cleaning
- Easy to store when not in use - remove grate and fold up spill mat

Dimensions	Wall height	Code
1200mm x 600mm	75mm	SCSM1.2X0.6G-CS

Spill pallets - poly

Spill pallets are used to capture any leaks, drips or spills as they occur. For outdoor storage, use bund covers to prevent rainwater ingress and the subsequent overflow of any captured liquid. Our range of 100% polyethylene bunds, combined with their polypropylene grates, provide superior corrosion resistance to a wide range of chemicals, oil and fuel.



Two-drum spill pallet

- Store up to two 205L drums or a combination of smaller containers
- Maximum uniformly distributed load (UDL): 1100kg
- 246L sump capacity
- 1240mm x 640mm x 510mm



Three-drum spill pallet

- Store three 205L drums or a combination of smaller containers
- Maximum UDL: 1100kg
- 250L sump capacity
- 1820mm x 630mm x 350mm



Four-drum spill pallet

- Store a pallet of 205L drums (four) or a combination of smaller containers
- Maximum UDL: 2800kg
- 242L sump capacity
- 1230mm x 1230mm x 280mm

Description	Sump capacity	Code
Two drum spill pallet	246 litres	DB2G

Description	Sump capacity	Code
Three drum spill pallet	250 litres	DB3G

Description	Sump capacity	Code
Four drum spill pallet	242 litres	DB4G



Four-drum spill pallet - in-line

- In-line storage for up to four 205L drums or a combination of smaller containers
- Maximum UDL: 2800kg
- 245L sump capacity
- 2420mm x 620mm x 252mm



Single IBC spill pallet

- Store a single 1000L IBC
- Includes drain plugs at each end
- Maximum UDL: 2000kg
- 1150L sump capacity
- 1900mm x 1500mm x 750mm



Double IBC spill pallet

- Store two 1000L IBCs or a combination of smaller drums and containers
- Includes drain plugs at each end
- Maximum UDL: 3600kg
- 1470L sump capacity
- 2830mm x 1490mm x 670mm

Description	Sump capacity	Code
Four drum spill pallet - in-line	245 litres	DB4GIL

Description	Sump capacity	Code
Single IBC spill pallet	1150 litres	DBSIBC

Description	Sump capacity	Code
Double IBC spill pallet	1470 litres	DBDIBC

All Spill Crew spill pallets and trays include encapsulated data plates to display vital information



Store liquids confidently on Spill Crew's spill pallets and drip trays. Encapsulated data plates are moulded into the polyethylene so they will never peel off or fade.

Our data plates include vital information such as maximum weight load-bearing capability, product composition materials, sump capacity and net weight.

Avoid overflowing bunds and trays by having the information on hand when you are loading and unloading drums and containers. This keeps your people and the environment safe from contamination.

Spill pallets - steel

Steel spill pallets are tough and sturdy enough to endure frequent forklift activity on worksites. They are also suitable for storage of Class 3 flammable liquids or other compatible chemicals.

- Powder-coated steel bund with galvanised steel grates
- Forklift friendly from both sides
- Removable grates for easy cleaning and removal of spilled liquid, rainwater or any trapped debris



Two-drum steel spill pallet

- Store up to two 205L drums or a combination of smaller containers
- Maximum UDL: 1100kg
- 300L sump capacity
- 1268mm x 684mm x 418mm



Four-drum steel spill pallet

- Store up to four 205L drums or a combination of smaller containers
- Maximum UDL: 2000kg
- 243L sump capacity
- 1204mm x 1354mm x 227mm



Four-drum steel spill pallet - shrouded

- Store up to four 205L drums
- Includes safety guard and locking chain
- Maximum UDL: 2000kg
- 243L sump capacity
- 1200mm x 1360mm x 1100mm

Description	Sump capacity	Code
Two drum steel spill pallet	300 litres	SPDB2

Description	Sump capacity	Code
Four drum steel spill pallet	243 litres	SPDB4

Description	Sump capacity	Code
4-drum shrouded steel spill pallet	243 litres	SPDB4S



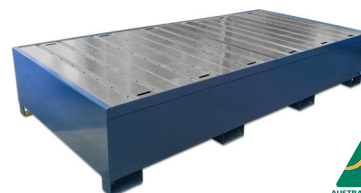
Four-drum steel spill pallet for pallet racking

- Store up to four 205L drums
- Integral locking bars suit standard pallet racking (840mm) for minimal movement
- Maximum UDL: 2000kg
- 1284mm x 1239mm x 234mm



Single IBC steel spill pallet

- Store a single 1000L IBC
- Includes drain plug at one end
- Maximum UDL: 2000kg
- 1140L sump capacity
- 1230mm x 1710mm x 640mm



Double IBC steel spill pallet

- Store two 1000L IBC or a combination of smaller drums and containers
- Includes drain plugs at each end
- Maximum UDL: 3600kg
- 1165L sump capacity
- 2526mm x 1232mm x 471mm

Description	Sump capacity	Code
4-drum steel spill pallet for pallet racking	230 litres	SPDB4P

Description	Sump capacity	Code
Steel IBC spill pallet single	1140 litres	SPIBC1

Description	Sump capacity	Code
Steel IBC spill pallet double	1165 litres	SPIBC2



Oil discharge filter and bag for single or double IBC spill pallets/bunds

- Capture up to 30L of oil, fuel and other hydrocarbons when draining rainwater from the bund
- Lightweight, aluminium internal flow distributor with 50mm female camlock adaptor for quick connection and release
- Replacement bags available to order individually

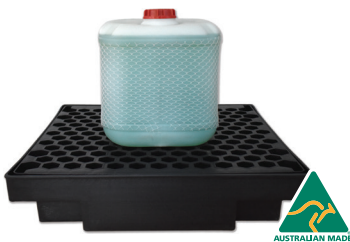
Description	Code
Oil discharge filter and bag	OFB
Replacement bag for oil discharge filter	ORBR
Oil discharge filter adaptor kit	OFB-AK



Spill pallets - low profile

Low profile spill pallets are portable, safe and convenient for storing drums and small liquid containers. Designed for easy access they can be joined together to form a bunded work platform (see opposite page), improving workplace safety and protecting the environment.

- Chemical-resistant polyethylene bund with polypropylene grate(s) can be used with most chemicals, acids, oil or fuel
- Removable grates provide easy access to the sump for draining or cleaning
- Encapsulated data plates feature vital user information such as sump capacity, maximum uniformly distributed load (UDL), composition materials and net weight
- Manufactured and tested in Australia



One-drum spill pallet - low profile

- Store a 20L, 60L drum or batteries
- Maximum UDL: 750kg
- 38L sump capacity
- 600mm x 600mm x 150mm



Two-drum spill pallet - low profile

- Store 20L, 60L drums or batteries
- Maximum UDL: 1500kg
- 83L sump capacity
- 1220mm x 610mm x 150mm



Four-drum spill pallet - low profile

- Store 20L, 60L drums or batteries
- Maximum UDL: 2800kg
- 145L sump capacity
- 1210mm x 1210mm x 150mm

Description	Sump cap.	Code
Low profile one drum spill pallet	38 litres	DB1LP

Description	Sump cap.	Code
Low profile two drum spill pallet	83 litres	DB2LP

Description	Sump cap.	Code
Low profile four drum spill pallet	145 litres	DB4LP



Six-drum spill pallet - low profile

- Store 20L, 60L, 205L drums or batteries
- Maximum UDL: 3500kg
- 240L sump capacity
- 1820mm x 1220mm x 150mm



Eight-drum spill pallet - low profile

- Store 20L, 60L, 205L drums or batteries
- Maximum UDL: 3600kg
- 240L sump capacity
- 2420mm x 1210mm x 150mm

Description	Sump cap.	Code
Low profile six drum spill pallet	240 litres	DB6LP

Description	Sump cap.	Code
Low profile eight drum spill pallet	270 litres	DB8LP

BUILT TOUGH, TESTED TOUGH

ALL SPILL CREW SPILL PALLETS AND TRAYS ARE MADE RIGHT HERE IN AUSTRALIA AND ARE BUILT AND TESTED FOR OUR TOUGH AUSTRALIAN CONDITIONS.



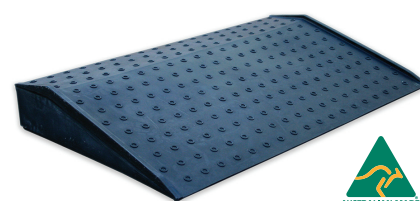
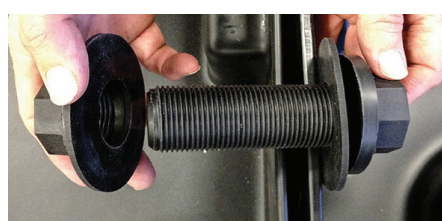
What is a banded floor system?

Banded floor systems are ideal for any area where liquids are handled and drips, leaks or spills may occur. By combining low profile spill pallets any configuration can be achieved by combining two, four, six or eight-drum spill pallets to suit the available space.

Spill Crew low profile bunds connect seamlessly together with joining strips. Use our sump-to-sump bund connectors to increase the capacity of the bund allowing spilled liquids to flow through all connected spill pallets

Spill Crew low profile bunds are constructed from tough polyethylene and feature removable polypropylene grates. This provides superior corrosion resistance to a wide range of chemicals, oils and fuels.

Spill Crew low profile spill pallets feature encapsulated data plates which provide instructions for the operator, load-bearing capacities, bund volume and construction materials. These plates cannot peel off or be lost as they are moulded into the bund.



Joining strips for low profile spill pallets

- Prevent spills from seeping between bunds
- Available in two different lengths
- Polypropylene easy to cut down to size

Sump connector for low profile bunds

- Increase the overall sump capacity of joined low profile spill pallets
- Create double-sided seal for liquid-tight connection

Ramp for low profile spill pallets

- Strong, robust design for use with low profile spill pallets
- Ramp supplied with two joining clips
- Maximum UDL: 1000kg

Description	Size	Code
Joining strip for LP spill pallets	1183mm	DBLPJS1183
Joining strip for LP spill pallets	1793mm	DBLPJS1793

Description	Size	Code
Sump connector for spill pallets	25mm Ø	DBC

Description	Dimensions	Code
Ramp for spill pallets	1220 x 750 x 184mm	DBRLPB

Joining strips - available in two lengths

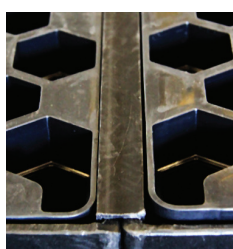
To join the bunds together, simply push the U-shaped channel down the length of the join.



The strip holds the two bunds together and prevents spills from seeping between the bunds.



Push the strip down to hold the abutting bund walls together.



The strip holds the two bunds together preventing spills from seeping between the abutting walls.

How many joining strips do I need?

Drum bund	Short side	Long side
Low profile drum bund (2 drum)	½ x DBLPJS1183	1 x DBLPJS1183
Low profile drum bund (4 drum)	1 x DBLPJS1183	1 x DBLPJS1183
Low profile drum bund (6 drum)	1 x DBLPJS1183	1 x DBLPJS1793
Low profile drum bund (8 drum)	1 x DBLPJS1183	2 x DBLPJS1183

Spill pallet covers

Protect your drums and IBCs from environmental damage and prevent rainwater or other debris contaminating the bund's sump. Our spill pallet covers are available in a variety of styles and sizes to suit your application - soft canvacon, framed canvacon, hard top or anti-static.



Description	Use with	Code
Soft yellow canvacon cover	DB1GS	COVS-DB1GS



Description	Use with	Code
Soft yellow canvacon cover	DB2G	COVS-DB2G



Description	Use with	Code
Soft yellow canvacon cover	DB3G	COVS-DB3G



Description	Use with	Code
Soft yellow canvacon cover	DB4G	COVS-DB4G

Framed cover - yellow canvacon	DB4G	COVF-DB4G
--------------------------------	------	-----------



Description	Use with	Code
Soft yellow canvacon cover	DB4GIL	COVS-DB4GIL

Framed cover - yellow canvacon	DB4GIL	COVF-DB4GIL
--------------------------------	--------	-------------



Description	Use with	Code
Soft yellow canvacon cover	DBSIBC	COVS-DBSIBC

Soft yellow canvacon cover	IBC only (no bund)	COVS-IBC
----------------------------	--------------------	----------

Framed cover - yellow canvacon	DBSIBC	COVF-DBSIBC
--------------------------------	--------	-------------



Description	Use with	Code
Soft yellow canvacon cover	DBDIBC	COVS-DBDIBC

Framed cover - yellow canvacon	DBDIBC	COVF-DBDIBC
--------------------------------	--------	-------------



Description	Use with	Code
Hard top cover	DB4G	COVH-DB4G

Hard top cover	DBDIBC	COVH-DBDIBC
----------------	--------	-------------



Description	Use with	Code
Soft yellow canvacon cover	SPDB2	COVS-SPDB2



Description	Use with	Code
Soft yellow canvacon cover	SPDB4	COVS-SPDB4

Framed cover - yellow canvacon	SPDB4	COVF-SPDB4
--------------------------------	-------	------------

Soft yellow canvacon cover	SPDB4S*	COVS-SPDB4S
----------------------------	---------	-------------

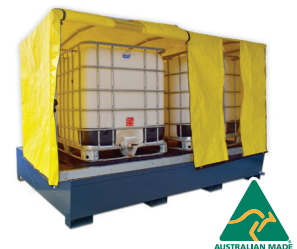
*For use with shrouded 4-drum steel spill pallet



Description	Use with	Code
Soft yellow canvacon cover	SPIBC1	COVS-SPIBC1

Soft yellow canvacon cover	IBC only (no bund)	COVS-IBC
----------------------------	--------------------	----------

Framed cover - yellow canvacon	SPIBC1	COVF-SPIBC1
--------------------------------	--------	-------------



Description	Use with	Code
Soft yellow canvacon cover	SPIBC2	COVS-SPIBC2

Framed cover - yellow canvacon	SPIBC2	COVF-SPIBC2
--------------------------------	--------	-------------

Collapsible bunds

Spill Crew collapsible bunds are a unique pop-up bunding solution enabling operators to quickly create a safe and secure area to house drums, tanks, plant and machinery and to contain potential spills. Collapsible bunds are available in a variety of standard sizes and materials.

- Use as a decontamination bund to capture contaminated washwater.
- Contain leaks, drips and spills from tanks, drums or machinery.
- Quickly store pallets of drums or IBCs.
- Use for temporary/portable storage of large equipment or multiple containers.
- External wall braces create self supporting walls which can be collapsed for easy access by personnel.
- Lightweight and portable - fold to a convenient size for transport/storage.
- Small bunds are supplied in a carry bag with a velcro opening and handles.
- An optional anti-abrasion mat or internal floor protector is available to help protect the bund from damage by vehicles or when placed on rough ground.
- Spill mat sizes and designs can be easily customised – contact us to discuss your requirements.



Available materials:



**STANDARD DUTY
900GSM ORANGE PVC**



**HEAVY DUTY
1350GSM BLACK PVC**



**CHEMICAL DUTY
FOR AGGRESSIVE CHEMICALS**

SIZE	VOL.	900gsm	1350gsm	Chemical duty*
1.2m x 1.2m	500L	SCCB1.2X1.2-SD	SCCB1.2X1.2-HD	SCCB1.2X1.2-CD
1.6m x 1.2m	672L	SCCB1.6X1.2-SD	SCCB1.6X1.2-HD	SCCB1.6X1.2-CD
1.6m x 1.6m	896L	SCCB1.6X1.6-SD	SCCB1.6X1.6-HD	SCCB1.6X1.6-CD
2m x 1.6m	1120L	SCCB2X1.6-SD	SCCB2X1.6-HD	SCCB2X1.6-CD
2m x 2m	1400L	SCCB2X2-SD	SCCB2X2-HD	SCCB2X2-CD
2.4m x 1.2m	1008L	SCCB2.4X1.2-SD	SCCB2.4X1.2-HD	SCCB2.4X1.2-CD
2.4m x 2m	1680L	SCCB2.4X2-SD	SCCB2.4X2-HD	SCCB2.4X2-CD
2.4m x 2.4m	2016L	SCCB2.4X2.4-SD	SCCB2.4X2.4-HD	SCCB2.4X2.4-CD
2.8m x 1.6m	1568L	SCCB2.8X1.6-SD	SCCB2.8X1.6-HD	SCCB2.8X1.6-CD
2.8m x 2.8m	2744L	SCCB2.8X2.8-SD	SCCB2.8X2.8-HD	SCCB2.8X2.8-CD
3.2m x 2m	2240L	SCCB3.2X2-SD	SCCB3.2X2-HD	SCCB3.2X2-CD
3.2m x 3.2m	3584L	SCCB3.2X3.2-SD	SCCB3.2X3.2-HD	SCCB3.2X3.2-CD

SIZE	VOL.	900gsm	1350gsm	Chemical duty*
3.6m x 2.4m	3024L	SCCB3.6X2.4-SD	SCCB3.6X2.4-HD	SCCB3.6X2.4-CD
3.6m x 3.6m	4536L	SCCB3.6X3.6-SD	SCCB3.6X3.6-HD	SCCB3.6X3.6-CD
4m x 2.4m	3360L	SCCB4X2.4-SD	SCCB4X2.4-HD	SCCB4X2.4-CD
4m x 4m	5600L	SCCB4X4-SD	SCCB4X4-HD	SCCB4X4-CD
4.8m x 4.8m	8064L	SCCB4.8X4.8-SD	SCCB4.8X4.8-HD	SCCB4.8X4.8-CD
6.8m x 3.2m	7616L	SCCB6.8X3.2-SD	SCCB6.8X3.2-HD	SCCB6.8X3.2-CD
8.4m x 4.4m	12,936L	SCCB8.4X4.4-SD	SCCB8.4X4.4-HD	SCCB8.4X4.4-CD
10m x 3.6m	12,600L	SCCB10X3.6-SD	SCCB10X3.6-HD	SCCB10X3.6-CD
10m x 4.8m	16,800L	SCCB10X4.8-SD	SCCB10X4.8-HD	SCCB10X4.8-CD
14.8m x 3.6m	18,648L	SCCB14.8X3.6-SD	SCCB14.8X3.6-HD	SCCB14.8X3.6-CD
14.8m x 5.6m	29,008L	SCCB14.8X5.6-SD	SCCB14.8X5.6-HD	SCCB14.8X5.6-CD

*Check chemical compatibility prior to purchase

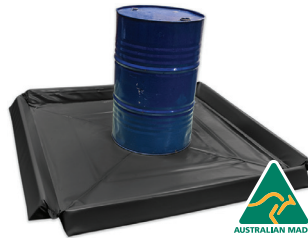
Spill mats

These bunded spill mats are a portable and reusable spill solution, perfect for catching leaks, drips and spills wherever equipment, machinery or vehicles are serviced, maintained or cleaned.

- Bunded spill mats are ideal to capture spills when storing vehicles, plant and machinery.
- Easy to store, transport and set up - use as a portable washpad.
- Easy store spill mats are manufactured using a high-temperature resistance welding process that ensures leak-tight joints.
- Bund walls are made from an encapsulated, compressible, closed-cell foam allowing vehicles to drive on and off the bund.
- Easy store spill mats are supplied in a carry / storage bag.
- Choose from 75mm or 100mm wall height.
- Spill mat sizes and designs can be easily customised – contact us to discuss your requirements.
- Designed and manufactured in Australia.



**STANDARD DUTY
900GSM ORANGE PVC**



**HEAVY DUTY
1350GSM BLACK PVC**

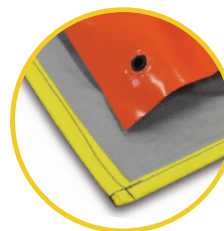


**CHEMICAL DUTY
FOR AGGRESSIVE CHEMICALS**

Dimensions	75MM WALL HEIGHT				100MM WALL HEIGHT			
	Vol.	900gsm	1350gsm	Chemical duty*	Vol.	900gsm	1350gsm	Chemical duty*
0.6m x 0.6m	27L	SCSM0.6X0.6-SD	SCSM0.6X0.6-HD	SCSM0.6X0.6-CD	36L	SCSM0.6X0.6-SDX	SCSM0.6X0.6-HDX	SCSM0.6X0.6-CDX
1m x 1m	75L	SCSM1X1-SD	SCSM1X1-HD	SCSM1X1-CD	100L	SCSM1X1-SDX	SCSM1X1-HDX	SCSM1X1-CDX
1.2m x 1.2m	108L	SCSM1.2X1.2-SD	SCSM1.2X1.2-HD	SCSM1.2X1.2-CD	144L	SCSM1.2X1.2-SDX	SCSM1.2X1.2-HDX	SCSM1.2X1.2-CDX
1.5m x 1.5m	169L	SCSM1.5X1.5-SD	SCSM1.5X1.5-HD	SCSM1.5X1.5-CD	225L	SCSM1.5X1.5-SDX	SCSM1.5X1.5-HDX	SCSM1.5X1.5-CDX
2m x 1m	150L	SCSM2X1-SD	SCSM2X1-HD	SCSM2X1-CD	200L	SCSM2X1-SDX	SCSM2X1-HDX	SCSM2X1-CDX
2m x 1.5m	225L	SCSM2X1.5-SD	SCSM2X1.5-HD	SCSM2X1.5-CD	300L	SCSM2X1.5-SDX	SCSM2X1.5-HDX	SCSM2X1.5-CDX
2m x 2m	300L	SCSM2X2-SD	SCSM2X2-HD	SCSM2X2-CD	400L	SCSM2X2-SDX	SCSM2X2-HDX	SCSM2X2-CDX
3m x 3m	675L	SCSM3X3-SD	SCSM3X3-HD	SCSM3X3-CD	900L	SCSM3X3-SDX	SCSM3X3-HDX	SCSM3X3-CDX
4m x 2m	600L	SCSM4X2-SD	SCSM4X2-HD	SCSM4X2-CD	800L	SCSM4X2-SDX	SCSM4X2-HDX	SCSM4X2-CDX
4m x 4m	1200L	SCSM4X4-SD	SCSM4X4-HD	SCSM4X4-CD	1600L	SCSM4X4-SDX	SCSM4X4-HDX	SCSM4X4-CDX
6m x 3m	1350L	SCSM6X3-SD	SCSM6X3-HD	SCSM6X3-CD	1800L	SCSM6X3-SDX	SCSM6X3-HDX	SCSM6X3-CDX
6m x 4m	1800L	SCSM6X4-SD	SCSM6X4-HD	SCSM6X4-CD	2400L	SCSM6X4-SDX	SCSM6X4-HDX	SCSM6X4-CDX
8m x 5m	3000L	SCSM8X5-SD	SCSM8X5-HD	SCSM8X5-CD	4000L	SCSM8X5-SDX	SCSM8X5-HDX	SCSM8X5-CDX
12m x 6m	5400L	SCSM12X6-SD	SCSM12X6-HD	SCSM12X6-CD	7200L	SCSM12X6-SDX	SCSM12X6-HDX	SCSM12X6-CDX

OPTIONS FOR YOUR EQUIPMENT

Anti-abrasion mats and internal floor protectors are designed to prevent damage to the bund when driven over by vehicles, forklifts or pallet jacks, or where bunds are installed on rough surfaces



Anti-abrasion mats are designed for use underneath collapsible bunds and spill mats



Internal floor mats are designed to fit inside collapsible bunds and spill mats

Floor bunding

Semi-permanent, drive-over bunding creates a barrier or containment area for storing drums, tanks, machinery and equipment. Our range of floor bunding provides a low-cost alternative to concrete bunding and is suitable for everyday use across sites and workplaces.



Tuff bund

- Tough polyurethane drive-over bunding
- Ideal for high traffic areas - indoor and outdoor
- Resistant to range of chemicals, oils and fuels
- Simple to install by semi-skilled labour
- Choose from 1m or 1.5m lengths | 25mm high

Description	Notes	Code
Tuff bund strip small	1m x 150mm x 25mm	GTB1
Tuff bund strip large	1.5m x 150mm x 25mm	GTB1.5
90° corner piece	350 x 350 x 150 x 25mm	GTB90
Installation starter pack	For initial installation	GTB-SPIK
Sealant adhesive	390g	GTB-SA
1m strip fastener pack	Hex drive anchors, nylon sleeve anchors & washers	GTB-FP6
1.5m strip fastener pack		GTB-FP8
Tuff bund cleaner	500ml	GTB-C500



Easy bund

- Self-adhesive drive-over floor bunding
- Chemical and UV-resistant EVA material
- Resistant to most acids, chemicals, oil and fuels
- High visibility yellow colour
- Two heights available - 22mm or 40mm

Description	Size	Code
Easy bund - low profile	970mm x 140mm x 22mm	PEBB
Easy bund - high profile	970mm x 140mm x 40mm	PEBB40



Smart bund

- Drive over bunding - springs back into shape
- Ideal for sealed surfaces (warehouses / factories)
- Made from closed-cell foam covered by PVC
- Bright orange colour for high visibility
- Choose from 50mm, 75mm or 100mm height

Description	Size (mm)	Code
Smart bund straight length 4m	50 / 75 / 100 high	SB4
Smart bund 90° corner join	50 / 75 / 100 high	SB90
Smart bund 45° corner join	50 / 75 / 100 high	SB45
Smart bund end bung	50 / 75 / 100 high	SBEB
Smart bund PVC joiner	200mm x 200mm	SBJ
Smart bund T-joiner	50 / 75 / 100 high	SBT
PVC to PVC adhesive	500ml	SBG
Heavy duty adhesive	310ml	GTB-SA
Hold down flatbar aluminium	4m x 20mm x 4mm	SBA4
Hold-down flatbar kit	28x 8mm Dynabolts	SBA4INS

Containment barriers

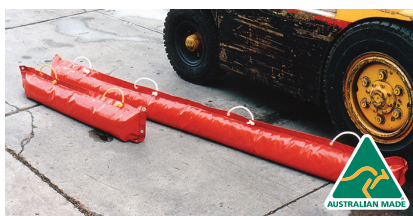
These sand or water-filled barriers provide effective and immediate stormwater protection in the event of a spill. The weight of the sand or water prevents any movement from pressure or external forces. These reusable barriers are rapid to deploy and suitable for emergency or temporary bunding of drains. Use to:

- surround leaking drums, tanks or machinery
- prevent rainwater from entering an area
- protect stormwater drains
- protect drains inside factories
- contain spills on factory floors
- surround spills from vehicles



Sand-filled containment barriers - PVC

- Pre-filled, flexible and impervious barriers
- Manufactured from 650gsm PVC
- Resistant to most oils and chemicals



Sand-filled barriers - urethane

- Pre-filled, flexible and impervious barriers
- Manufactured from heavy duty urethane
- Resistant to most oils and chemicals



Water-filled containment barriers - PVC

- Fill with water to create impervious barrier
- Manufactured from 650gsm PVC
- Resistant to most oils and chemicals

Material	Size	Weight	Code
PVC	1.2m x 0.15m ø	17kg	PCBSF1.2
PVC	2.4m x 0.15m ø	32kg	PCBSF2.4
PVC	3.0m x 0.15m ø	40kg	PCBSF3.0

Material	Size	Weight	Code
Urethane	1.2m x 0.15m ø	17kg	PCBSFU1.2
Urethane	2.4m x 0.15m ø	33kg	PCBSFU2.4
Urethane	3.0m x 0.15m ø	41kg	PCBSFU3.0

Material	Size	Weight	Code
PVC	2m x 200mm	2kg	PCBWF2X200
PVC	4m x 200mm	4kg	PCBWF4X200

Drain covers and barriers

Prevent spills entering stormwater drains with this range of covers, protectors and traps. These are an excellent spill response tool and help operators avoid costly fines associated with unauthorised discharge violations.



Drain covers - urethane

- Manufactured from heavy duty urethane
- Resistant to most chemicals and hydrocarbons
- Tacky base sticks to smooth surfaces
- Reusable and easy to deploy
- Wall-mounted storage sleeve also available
- Choose from four sizes

Description	Code
Urethane drain cover 0.6m x 0.6m	UDP600
Urethane drain cover 0.9m x 0.9m	UDP900
Urethane drain cover 1m x 1m	UDP1000
Urethane drain cover 1.2m x 1.2m	UDP1200



Drain covers - water-filled

- Manufactured from 650gsm PVC
- Resistant to most chemicals and hydrocarbons
- Flexible nature moulds to uneven surfaces
- Choose size which overlaps grate by >200mm
- Compact design is easily foldable for storage
- Reusable and easy to deploy

Description	Code
Water-filled drain cover - 1m x 1m	PCBWF1X1
Water-filled drain cover - 1.5m x 1.5m	PCBWF1.5X1.5



Drain covers - gel-weighted

- Manufactured from 650gsm PVC outer skin
- Resistant to most chemicals and hydrocarbons
- Flexible gel nature moulds to uneven surfaces
- Heavy gel weight keeps cover in place
- Choose size which overlaps grate by >200mm
- Reusable and easy to deploy

Description	Code
Gel drain cover - 600mm x 600mm	PCBGF-0.6X0.6
Gel drain cover - 900mm x 900mm	PCBGF-0.9X0.9
Gel drain cover - 1.2m x 1.2m	PCBGF-1.2X1.2

Sediment traps

Sediment traps and silt socks are non-absorbent, permeable barriers designed to help trap and prevent solids and silt from entering street kerbside drains.



Sediment trap

- Geotextile fabric filled with permeable gravel
- Non-absorbent- allows liquid to flow through
- Portable, easy to use and fast to deploy
- Available in two sizes

Description	Size	Code
Sediment trap - small	1.2m x 200mm ø	PST1.2
Sediment trap - large	2m x 200mm ø	PST2



Silt sock

- Catches solids, coarse silt and sand
- Geotextile fabric
- Portable, easy to use and fast to deploy
- Available empty or filled with permeable gravel

Description	Size	Code
Silt sock (empty)	1.2m x 200mm	SSNB
Silt sock (filled)	1.2m x 200mm ø	SSNBF



Drain warden with hydrocarbon pillow

- Filters hydrocarbons in stormwater drains
- Sits below the drain grate
- UV-stabilised 200 micron geotextile fabric
- Includes oil and fuel absorbent pillow

Description	Size	Code
Drain warden	1.2m x 1.2m	ST1.2
Replacement pillow	580mm x 370mm	SCOF5837

YOUR AUTHORISED SPILL CREW RESELLER