

Combination Safety Shower with Eye/Face Wash

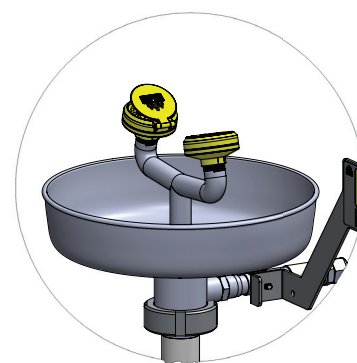
DELUGE SHOWER	EYEWASH	EYE / FACE WASH	HAND OPERATED	FOOT OPERATED	DRAIN BOWL
✓		✓	✓		✓

APPLICATION

The Spill Crew SCES-CF3 emergency safety shower provides a deluge of water to rapidly flush contaminants from the body. Combined with a dedicated eye/face wash station, contaminants and irritants can also be flushed from the eyes and surrounding facial area. These combination hand operated units with single point water supply connection and eye/face wash drain bowl are fully compliant with Australian Standard AS4775-2007, Emergency showers and eyewash equipment.

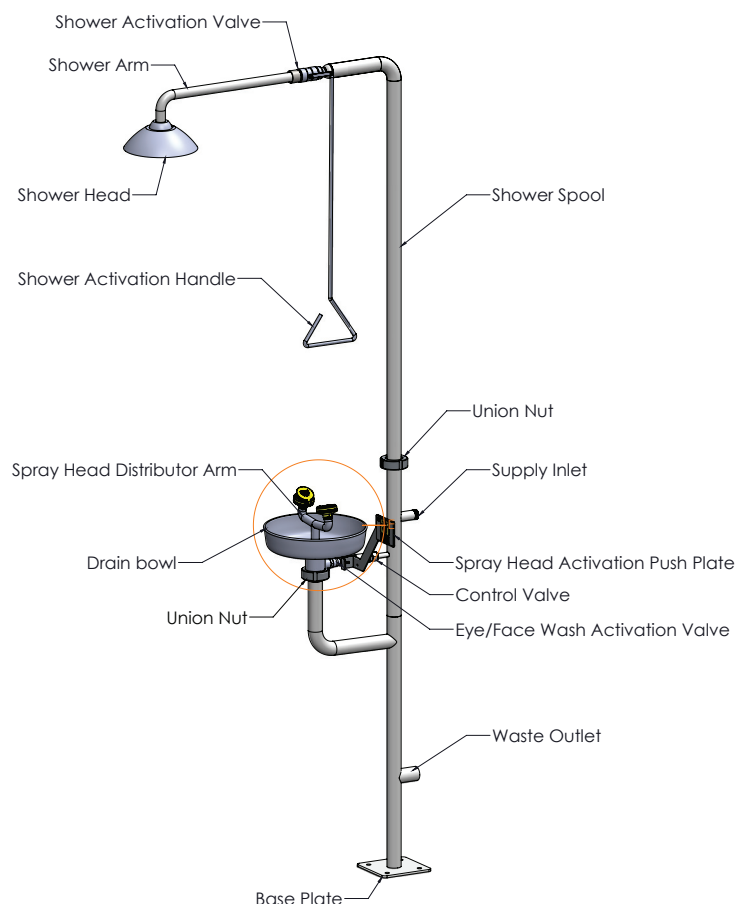
FEATURES

- Manufactured from corrosion resistant materials.
- Pull handle operated shower activation valve.
- Hand operated eye/face wash activation valve.
- Durable, engineered OptiStream spray heads with easy to clean filters, flow regulators and self-opening covers to protect flushing fluid from airborne contaminants.
- Drain bowl to direct eye/face wash flushing water to waste.
- Integral baseplate to allow easy floor fixing.



Eye/Face Wash Spray Heads

SPECIFICATIONS	
SERVICES	
Supply inlet:	25mm BSP male
Waste outlet:	38mm OD tube spigot to suit 1.1/2" hose
Design pressure - min/max:	210 kPa / 550 kPa
Shower flow rate - min/design:	75.7 L/min / 76 L/min
Eye/face wash flow rate - min/design:	11.4 L/min / 18 L/min
Max temperature:	38°C
COMPONENTS	
Pipework:	Grade 316 stainless steel
Activation valve - shower:	25mm, full bore, CF8M, 1000 WOG
Activation valve - eye/face wash:	1/2 inch, full bore, CF8M, 1000 WOG
Control valve - eye/face wash:	1/2 inch, full bore, 316SS, PN63
OptiStream spray heads:	1/2" BSP female, PA66 (Nylon)
OptiStream filters:	80 PPI pore density PU foam
OptiStream flow regulators:	Silicone, 60 duro, tapered orifice
Shower head & drain bowl:	Grade 316 stainless steel
Pull rod & activation push plate:	Grade 316 stainless steel
SHIPPING	
Shipping weight:	17kg
Shipping dimensions:	116cm x 38cm x 46cm

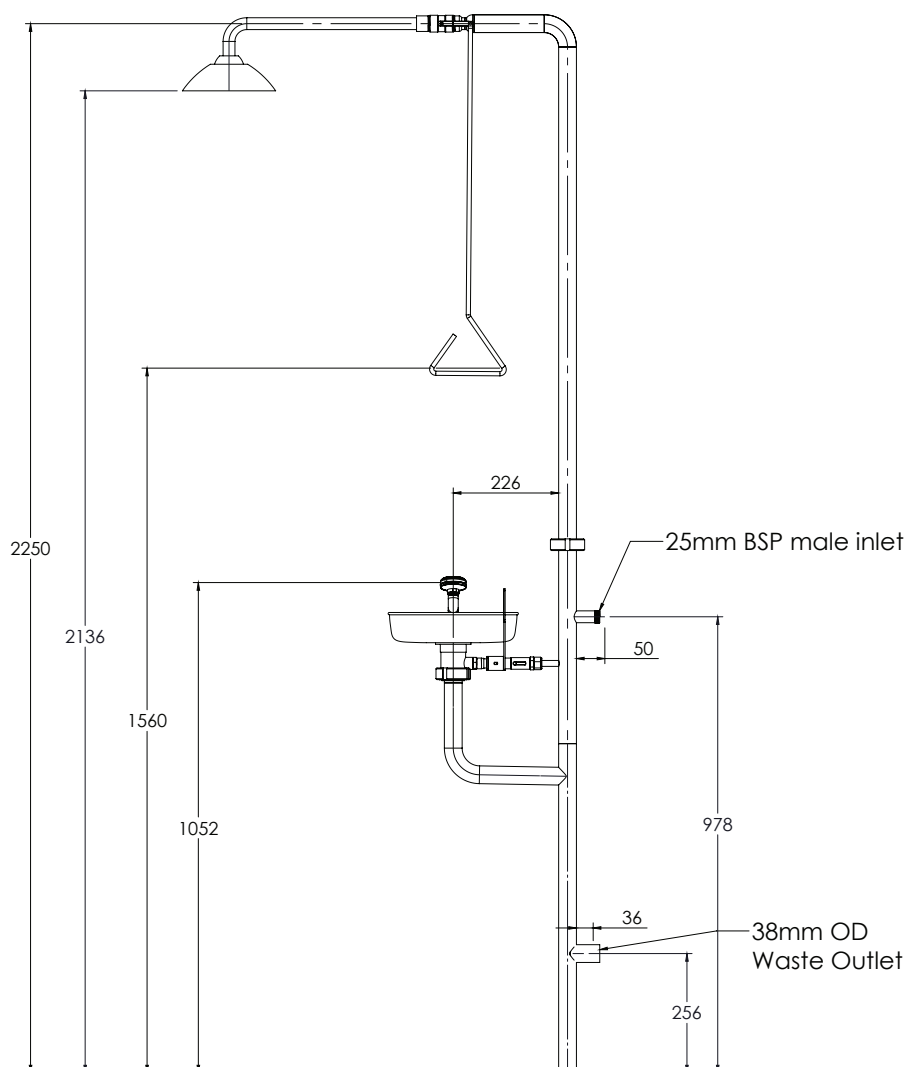


Technical Data Sheet

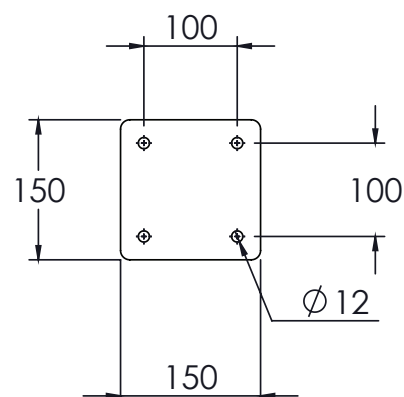
SCES-CF3



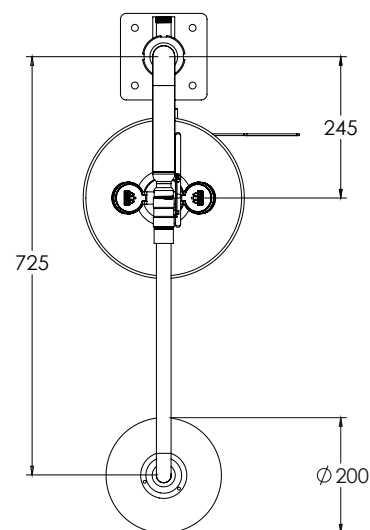
Side View Dimensions:



Base Plate Dimensions:



Top View Dimensions:



PERFORMANCE & COMPLIANCE

Testing:	Spill Crew emergency showers and eyewash equipment are manufactured to meet the requirements of AS4775-2007 and are independently tested for compliance by a NATA accredited laboratory.
Performance:	In accordance with AS4775-2007, plumbed emergency showers with combination eye/face wash must have a minimum uninterrupted flushing fluid supply capable of meeting the requirements of each component when both components are operating simultaneously.
Temperature:	AS4775-2007 refers to flushing fluids in excess of 38°C being harmful to the eyes and can enhance chemical interactions with the skin.
Research & Development:	Due to continual improvement and ongoing research and development, specifications may change without notice.